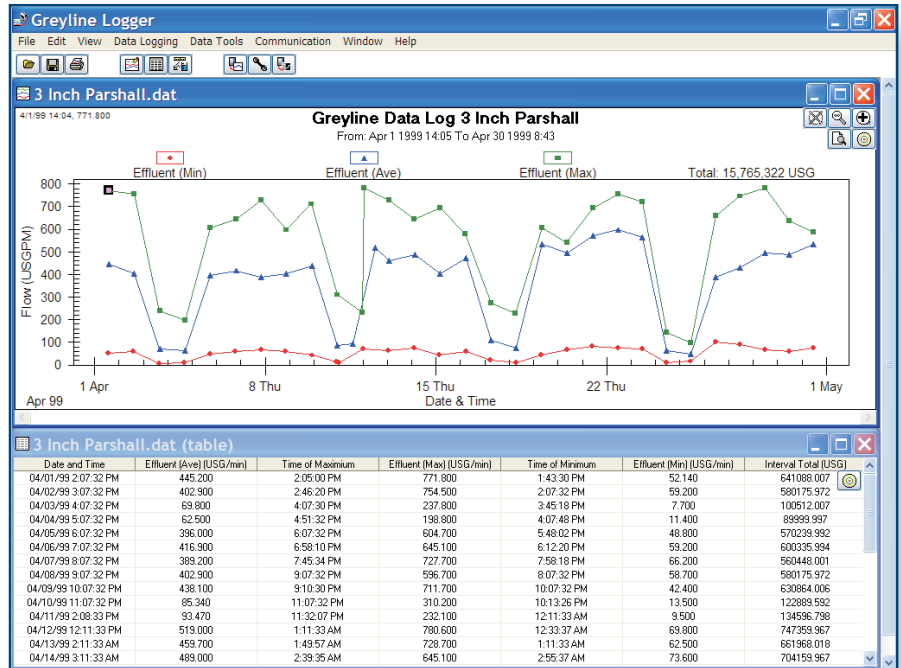


New!

Greyline Logger Software for Windows™

Retrieve, Display
Analyze & Export

Greyline Logger



Greyline Logger Graph and Table Views

Features

- Retrieve data log files from Greyline instruments by RS232 or RS485 connection or by dial-up modem
- Export log files in CSV text format for use in spreadsheet or database programs
- Export graphs in bitmap and vector formats
- Convert measurement units (e.g. gallons, liters, barrels, inches and mm)
- Create formatted reports with Minimum, Maximum, Average and Totals
- Create flow reports from level data through flumes and weirs
- Create flow reports from level/velocity data files
- View real-time data from Greyline Stingray
- Free with Greyline data logging models!

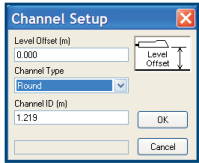
Greyline
instruments inc.

RELIABLE MEASUREMENT AND CONTROL

Greyline Logger Software

Data Retrieval, Display and Analysis

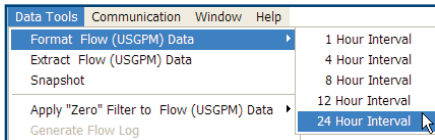
Loaded with Tools for Easy Reporting and Analysis



Calculates Flow from Level-Velocity log files



Generates Flow Reports from Flumes and Weirs



Generates Flow Reports with Minimum, Maximum, Average and Total

System Requirements

- ◆ Greyline Logger software runs on any PC with Windows™ 98, 2000, ME, NT or XP
- ◆ RS232 serial port or USB-to-RS232 converter for log file retrieval
- ◆ Modems for log file retrieval by dial-up telephone connection

Run the *Greyline Logger* program to retrieve and display data logs on your computer. Display multiple files or “sessions” on your PC in both graph and table formats.

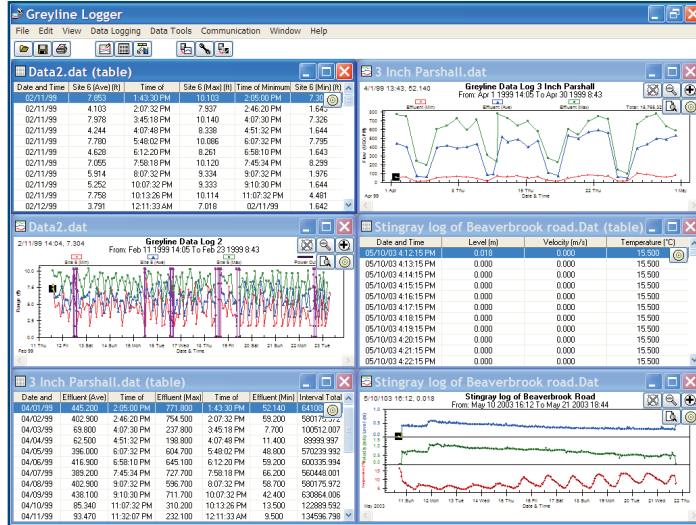
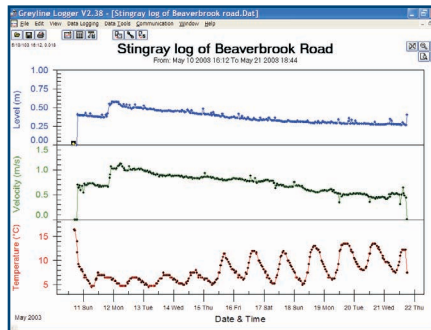


Table + Graph Views

Analyze data on-screen and save as disk files

Reload log files to compare current and past data, or logs from different sites

Greyline data logging instruments include an isolated RS232 serial output, terminal connections, cable and adaptors. Connect directly to the serial port on your PC or Laptop, or by dial-up connection through modems and phone lines.



Level-Velocity Log Files

View separate level, velocity and temperature data from Greyline Area-Velocity instruments



Real-time Display

View Level, Velocity and Temperature readings in real-time from Greyline Area-Velocity instruments

Greyline
instruments inc.

RELIABLE MEASUREMENT AND CONTROL

Canada: 16456 Sixsmith Dr., Long Sault, Ont. K0C 1P0
Tel: 613-938-8956 / 888-473-9546 Fax: 613-938-4857
USA: 105 Water Street, Massena NY 13662
Tel: 315-788-9500 / 888-473-9546 Fax: 315-764-0419
E-mail: info@greyline.com Web Site: www.greyline.com